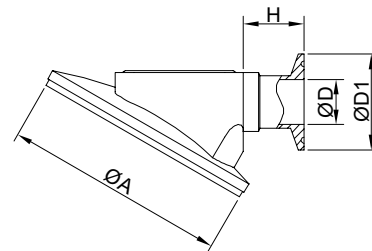


# 罐底隔膜阀 KST221

## TANK BOTTOM DIAPHRAGM VALVE

工作压力：0-10bar  
 工作温度：-40~150℃  
 驱动机构：手动控制  
 密封材质：EPDM,EPDM+TFM  
 阀体设计：直通阀体设计  
 阀体材质：316L ( 铸造 , EN1.4409 CF3M )  
 接口尺寸：DN20/DN50  
 接口方式：KST221-1：焊式、KST221-2焊卡式、  
 KST221-3:卡式  
 表面处理：外表面Ra≤0.5μm ( SF1 ) ,  
 内表面Ra≤0.375μm ( SF4 )  
 接口标准：ISO,DIN,ASME BPE.3A,BS

Working pressure: 0-10bar  
 Working temperature: -40~150℃  
 Drive mechanism: manual control  
 Seal material: EPDM+TFM, EPDM  
 Body design: straight through valve design  
 Body material: 316L (casting, CF3M EN1.4409)  
 Interface size: DN20/DN50  
 Interface type: KST221-1 type, KST221-2 type welding:  
 welding, KST221-3: card  
 Surface treatment: the outer surface of Ra is less than or equal  
 to 0.5 m (SF1),  
 The inner surface of Ra is less than or equal to 0.375 m (SF4)  
 Interface standard: ISO, DIN, BPE.3A BS, ASME



No.KST221-1

Size	D	D1	H	A
DN15	15.8	50.5	25	118
DN20	18.1	50.5	32	118
DN25	22.1	50.5	32	118
DN32	28.5	50.5	36	145
DN40	34.8	50.5	36	145
DN50	47.5	64	38	185

### 驱动器 ( 气动 )

类型：KST-PC221

尺寸：DN20-DN50

主要材质：不锈钢阀帽、支座、阀杆、PC手轮

状态显示：手动开关状态显示如图

Drive (pneumatic)

Type: KST-PC221

Size: DN20-DN50

Main material: stainless steel valve cap, bearing, valve stem, PC hand wheel

Status display: manual switch status display

SIZE	DN20	DN25	DN40	DN50
open	11	14	22	28
close	1	1	1	1